



SPRINGCOLLECTION

SS20



PROTECTIVE
SPORTS GEAR
FOR ACTIVE
PEOPLE

BLIZ

**PROTECTIVE
SPORTS GEAR
FOR ACTIVE
PEOPLE**





CORE VALUES



DESIGN

Swedish design which is at the cutting edge in function, technology and appearance. Carefully developed, quality-assured products which meet the necessary standards and requirements.



FLEXIBILITY

High technical and functional level. The product's functionality and the accessories available combine to provide an unbeatable versatility and flexibility.



VALUE

Bliz Active's advantageous pricing, along with the flexibility of the products and the accessories which are included in the price or can be purchased separately, provide unbeatable value for consumers.



ATTACHABLE HEAD STRAP

Make sure that your glasses stays in place with the adjustable neck strap

ATTACHABLE SWEAT BAR

Change appearance and functionality of the glasses with the detachable sweat bar

CHANGEABLE LENS

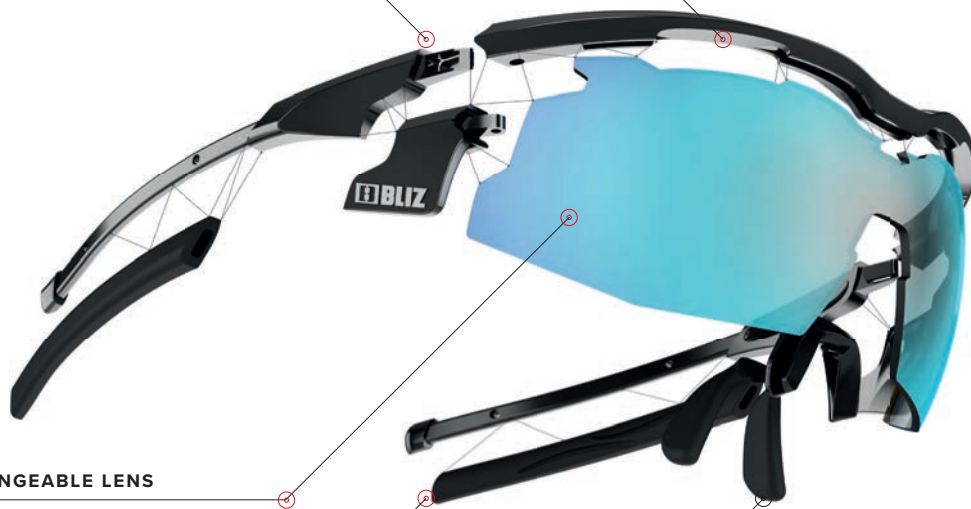
Change the lens according to weather conditions

ADJUSTABLE TEMPLES

Customize you glasses with the adjustable friction rubber temples for best fit

ADJUSTABLE NOSE PAD

Customize you glasses with the adjustable friction rubber nose pad for best fit



TECHNICAL ADVANCED SPORTS GLASSES

PROTECT YOUR EYES

Your glasses should not only protect your eyes from dangerous UVA and UVB rays, but they should also protect your eyes against wind, dust, bugs, rain, snow, sleet and anything else that you may encounter. It is therefore important that your sports glasses have both great fit and complete eye coverage. Bliz Active eyewear comes in a multitude of frame sizes allowing a perfect fit option for any, and every face.

STAY IN PLACE COMFORTABLY

Your sport glasses should not move about during your activities. If they do, they could cause irritation on the skin, obstruct vision and worst of all, become a distraction from your sport rather than an aid to your sport. Bliz Active eyewear come with patented click-in slip-proof straps, infinitely adjustable rubber temples and nose pieces. This means that your Bliz eyewear can stay comfortably in the perfect place with no slippage, to only enhance your performance.

UNOBSTRUCTED VISION

For maximal safety and top performance it is important that your glasses do not obstruct your vision and only enhance it. Bliz Active eyewear come in a multitude of frame configurations (and sizes) allowing a perfect fit option for any and every face. Several models come with frameless designs for unobstructed 360 degree vision. Others come with half frames and extra high brows. Bliz also offers an endless amount of interchangeable shades and unbreakable precision lens sets suited to maximize vision in the widest variety of different weather conditions. Bliz Active complies with standards EN ISO 12312-1, AS/NZS 1067 & ANSI Z80.3.

LIGHT WEIGHT

To ensure maximum mobility for the head and minimum tension in the neck, Bliz Active eyewear are superlight often weighing only about 25 g., up to 40% less than other brands.

BLIZ LENS TECHNOLOGY™

All Bliz Active glasses are equipped with Bliz Lens Technology to deliver precision lens sets of the highest optical standards. The materials and manufacturing techniques selected provide maximum safety and clarity, even in the toughest conditions. Whether it's an easy morning run through the woods, a daylong bike ride over a mountain pass, or a rapid descent down a snowy Nordic ski trail at sundown, Bliz Active lenses will keep you focused.

All Bliz Active lenses are made with Bliz X-PC, the virtually unbreakable Polycarbonate that complies with standard EN ISO 12312-1, AS/NZS 1067 and ANSI Z80.3 standards for high-mass and high velocity impact. This state of the art lens material also delivers a 100% filter from harmful UVA and UVB rays. Additionally all Bliz Active lenses are molded with Bliz Perfect Curve Technology™ to

provide no breaks or distortions in your visual field.

We offer five lens series' within which come with a multitude of lens shades. Bliz Ultra Lens Science™ is our top-end lens type. Nordic Light™ with lens technology that increases the contrasts. Bliz Hydro Lens System™ is our intermediate model. Bliz Fusion Lens Tech™ is our standard lens. A fourth lens type, Bliz Opti Lens Technology™, is a little special as it upgrades our Bliz Fusion Lens Tech™ with magnified vision for hard-to-read products such as cycle computers and cell phones.

Bliz Lens Technology delivers the highest quality solution for any weather, every light, all terrains and every speed so you can keep focused on what's ahead.



Bliz Ultra Lens Science™ is the ultimate in lens technology. It delivers perfect vision in most every environment by bringing the longest list of features together for the first time anywhere. ANTI-FOG, PHOTOCROMATIC, PRECISION CURVE, MAX UV-PROTECTION, OLEOPHOBIC, MULTICOATING, ANTI-WATER, NANO HARD COATING, X-PC SHATTER PROOF and more are all in this proprietary unique Bliz lens.



Nordic Light™ Innovative lens technology that increases the contrasts and blocks the faded colors in between. Nordic Light provides the wearer with enhanced flat light visibility.

This lens also provide UV-PROTECRTION, X-PC SHATTER PROOF, HYDROPHOBIC, ANTI SCRATCH and ANTI WATER.



Bliz Hydro Lens Technology™ is our intermediate lens type. It delivers HYDROPHOBIC features, UV-PROTECTION, X-PC SHATTER PROOF, ANTI SCRATCH and when desired Multicoating or Polarized in one great lens.



Bliz Fusion Lens Tech™ is the standard lens in the Bliz Active product line. It delivers UV-PROTECTION, SHATTER PROOF and when desired Multicoating or Polarized in one lens.



Bliz Opti Lens Technology™ provides lenses designed to keep you focused on your digital self while on the go. It delivers discreet magnified (+0.5, 1.0 2.0) vision in the lower portion of Bliz Fusion Lens to enhance the reading of cycle computers, cell phones and other small text items that are near at hand.

LENS TABLE	 ULTRA LENS SCIENCE™	 HYDRO LENS SYSTEM™	 FUSION LENS TECH™	 OPTI LENS TECHNOLOGY™	 NORDICLIGHT™
PHOTOCROMIC	X				
OLEOPHOBIC	X				
MULTICOATING	X	X	X		X
ANTI-FOG	X				
NANO HARD COATING ANTI-SCRATCH	X				
ANTI-WATER	X	X			X
ANTI-SCRATCH		X			X
X-PC SHATTER PROOF	X	X	X	X	X
UV PROTECTION	X	X	X	X	X
PERFECT CURVE	X				
READING STRENGTH				X	
POLARIZED		X	X		

X ALWAYS INCLUDED

X AVAILABLE IN CERTAIN MODELS

FILTER CATEGORIES

FILTER CATEGORY
0

INDOOR OR AT NIGHT

CLEAR OR LIGHTLY TINTED LENS.
TRANSMITTANCE GOES BETWEEN 80-100%

FILTER CATEGORY
1

FLAT LIGHT

LIGHTLY TINTED LENS. LUMINOUS OF
TRANSMITTANCE GOES BETWEEN 43-80%

FILTER CATEGORY
2

MODERATE SUNLIGHT

MEDIUM TINTED LENS. LUMINOUS OF
TRANSMITTANCE GOES BETWEEN 18-43%

FILTER CATEGORY
3

STRONG SUNLIGHT

DARK TINTED LENS. LUMINOUS OF
TRANSMITTANCE GOES BETWEEN 8-18%

FILTER CATEGORY
4

EXTREME SUNLIGHT

VERY DARK TINTED LENS. LUMINOUS OF
TRANSMITTANCE GOES BETWEEN 3-8%



VISION

Vision is designed to fit wider faces as well as Asia fit. A prescription lens adapter is available as an accessory for this model. The Optical Adapter enables prescription lenses to be built in for optimal vision when performing sports.

Vision is always ready for demanding sports and endless scenarios thanks to its Jawbone technology. You will never lose confidence in your ability or feel the lack of vision. Use it in stylish full frame mode with the included jawbones or choose to maximize your vision and just wear it with the cylindrical lightweight lens. The light and comfortable fit is made possible thanks to adjustable temples and nose pieces in the rubber cable core.

TECHNICAL FEATURES

1. Optical adapter available, for prescription lenses
2. Jawbone Technology and an extra jawbone in different color included
3. Including a nosepiece so you can wear it half framed
4. Fits normal to wider faces
5. Adjustable friction rubber nose pad
6. Adjustable temple tips in rubber wire core
7. Hydro Lens System™
8. Hard protective case
9. Cleaning cloth



VISION

PRODUCT OVERVIEW



VISION
PRICE
MARK
13



Vision 52001-03
Frame: Matt white
Lens: Smoke with blue multi
Filt.cat: 3 VLT: 14%
X-Jawbone: Black



Vision 52001-14
Frame: Matt Black
Lens: Smoke with red multi
Filt.cat: 3 VLT: 14%
X-Jawbone: White

VISION
PRICE
MARK
13



Vision 52001-43
Frame: Matt neon Pink
Lens: Brown with purple multi
Filt.cat: 3 VLT: 12%
X-Jawbone: Black



Vision 52001-63
Frame: Matt Neon Yellow
Lens: Smoke with blue multi
Filt.cat: 3 VLT: 14%
X-Jawbone: Black

OPTICAL ADAPTER
PRICE
MARK
3



Optical adapter for Vision 52001-RX
Frame: Transparent
Lens: Clear

FUSION

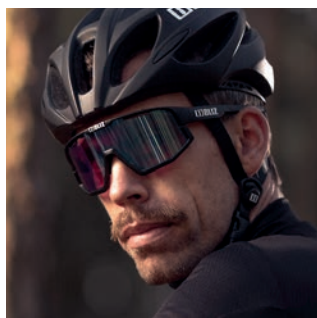
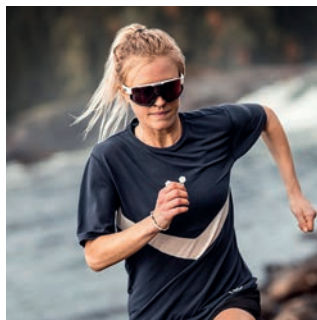


FUSION

Fusion is designed to maximize your performance. Ready for demanding sports and endless scenarios thanks to its jawbone technology. You will never lose confidence in your ability or feel the lack of vision. Use it in stylish full frame mode with the included jawbones or choose to maximize your vision and just wear it with the cylindrical lightweight lens. The light and comfortable fit is made possible thanks to adjustable temples and nose pieces in the rubber cable core.

TECHNICAL FEATURES

1. Jawbone Technology and an extra jawbone in different color included
2. Including a nosepiece so you can wear it half framed
3. Adjustable friction rubber nose pad
4. Adjustable temple tips in rubber wire core
5. Hydro Lens System™
6. Hard protective case
7. Cleaning cloth



FUSION

PRODUCT OVERVIEW



NORDIC LIGHT™
14

PRICE
MARK



Fusion 52005-13N
Frame: Matt black
Lens: Orange with blue multi
Filt.cat: 1 **VLT:** 49%
X-Jawbone: Black



Fusion 52005-14N
Frame: Matt black
Lens: Violet with blue multi
Filt.cat: 2 **VLT:** 22%
X-Jawbone: Black

FUSION
13

PRICE
MARK



Fusion 52905-04
Frame: Matt white
Lens: Smoke with red multi
Filt.cat: 3 **VLT:** 14%
X-Jawbone: White



Fusion 52905-13
Frame: Matt black
Lens: Smoke with blue multi
Filt.cat: 3 **VLT:** 14%
X-Jawbone: Black



Fusion 52905-34
Frame: Matt dark blue
Lens: Smoke with blue multi
Filt.cat: 3 **VLT:** 15%
X-Jawbone: Dark blue

FUSION
13

PRICE
MARK



Fusion 52005-71
Frame: Matt camo green
Lens: Smoke with silver mirror
Filt.cat: 3 **VLT:** 14%
X-Jawbone: Camo green

SPARE
PARTS



PRICE
MARK 3
52905-L0
Lens: Clear
Filt.cat: 0 **VLT:** 93%



PRICE
MARK 3
52905-L4
Lens: Pink
Filt.cat: 1 **VLT:** 55%



PRICE
MARK 6
C52905-L1
Lens: Smoke with silver mirror
Filt.cat: 3 **VLT:** 14%



PRICE
MARK 6
C52905-L3
Lens: smoke with blue multi
Filt.cat: 3 **VLT:** 14%

SPARE
PARTS



PRICE
MARK 6
C52905-L4
Lens: Smoke with red multi
Filt.cat: 3 **VLT:** 14%



PRICE
MARK 6
C52905-L9
LENS: Brown with rose multi
FILT.CAT: 3 **VLT:** 15%



MATRIX

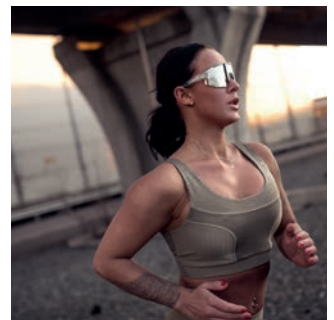
Matrix is fully loaded with design, technology and attitude for the most advanced multisport fanatics. With its cylindrical wide field of view lens, you are able to experience a new dimension of surroundings. A lens technology that significantly increases vertical visibility in racing position. These are ultimate features in sports performance.

The adjustable rubber nose pad and temple tips in wire core will help to provide all-day comfort while the top lens air scoops increase ventilation and reduce moisture on the lens.

Tested and celebrated by several well-known athletes around the world. Matrix delivers likes and comments wherever you go, thanks to its striking design and its amazing field of view.

TECHNICAL FEATURES

1. Adjustable friction rubber nose pad
2. Adjustable temple tips in rubber wire core
3. Hydro Lens System™
4. Hard protective case
5. Cleaning cloth



MATRIX

PRODUCT OVERVIEW



NORDIC LIGHT™
12
PRICE
MARK



Matrix 52004-13N
Frame: Matt black
Lens: Orange with blue multi
Filt.cat: 1 VLT: 49%



Matrix 52004-14N
Frame: Matt black
Lens: Violet with blue multi
Filt.cat: 2 VLT: 22%

MATRIX
11
PRICE
MARK



Matrix 52804-03
Frame: Shiny white
Lens: Smoke with blue multi
Filt.cat: 3 VLT: 14%



Matrix 52904-03
Frame: Matt white
Lens: Brown with purple multi
Filt.cat: 3 VLT: 12%



Matrix 52804-14
Frame: Matt black
Lens: Brown with red multi
Filt.cat: 3 VLT: 14%

MATRIX
11
PRICE
MARK



Matrix 52004-31
Frame: Transparent ice blue
Lens: Smoke with blue multi
Filt.cat: 3 VLT: 14%



Matrix 52904-43
Frame: Shiny pink
Lens: Smoke with blue multi
Filt.cat: 3 VLT: 14%



Matrix 52004-71
Frame: Camo green
Lens: Smoke with silver mirror
Filt.cat: 3 VLT: 14%

SPARE
PARTS



PRICE
MARK 3
52804-L0
Lens: Clear
Filt.cat: 0 VLT: 93%



PRICE
MARK 3
52804-L4
Lens: Pink
Filt.cat: 1 VLT: 55%



PRICE
MARK 6
C52904-L1
Lens: Smoke with silver mirror
Filt.cat: 3 VLT: 14%



PRICE
MARK 6
C52904-L2
Lens: Brown with purple multi
Filt.cat: 3 VLT: 14%

SPARE
PARTS



PRICE
MARK 6
C52904-L3
Lens: Smoke with blue multi
Filt.cat: 3 VLT: 14%



PRICE
MARK 6
C52904-L4
LENS: Smoke with red multi
FILT.CAT: 3 VLT: 14%



PRICE
MARK 6
C52904-L7
Lens: Brown with green multi
Filt.cat: 3 VLT: 12%



PRICE
MARK 6
C52904-L9
Lens: Brown with gold rose multi
Filt.cat: 3 VLT: 14%



MATRIX SMALL

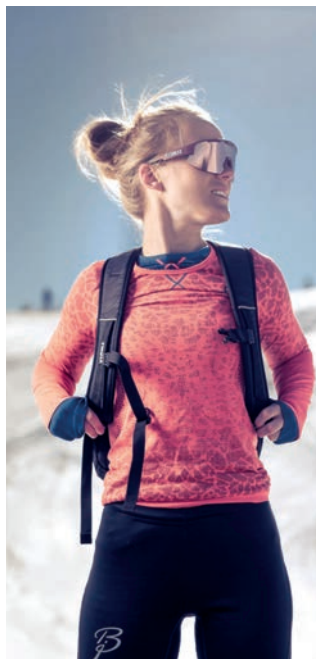
Matrix Small is fully loaded with design, technology and attitude for the most advanced multisport fanatics. With its cylindrical wide field of view lens, you are able to experience a new dimension of surroundings. A lens technology that significantly increases vertical visibility in racing position. These are ultimate features in sports performance.

The adjustable rubber nose pad and temple tips in wire core will help to provide all-day comfort while the top lens air scoops increase ventilation and reduce moisture on the lens.

Tested and celebrated by several well-known athletes around the world. Matrix delivers likes and comments wherever you go, thanks to its striking design and its amazing field of view.

TECHNICAL FEATURES

1. Adjustable friction rubber nose pad
2. Adjustable temple tips in rubber wire core
3. Hydro Lens System™
4. Hard protective case
5. Cleaning cloth



MATRIX SMALL

PRODUCT OVERVIEW



NORDIC LIGHT™
12
PRICE MARK



Matrix small 52007-13N
Frame: Matt black
Lens: Orange with blue multi
Filt.cat: 1 VLT: 49%



Matrix 52007-14N
Frame: Matt black
Lens: Violet with blue multi
Filt.cat: 2 VLT: 22%

MATRIX SMALL
11
PRICE MARK



Matrix small 52907-03
Frame: Matt white
Lens: Smoke with blue multi
Filt.cat: 3 VLT: 14%



Matrix small 52007-13
Frame: Matt black
Lens: Smoke with ice blue multi
Filt.cat: 3 VLT: 14%

MATRIX SMALL
11
PRICE MARK



Matrix small 52907-34
Frame: Matt dark blue
Lens: Brown with rose multi
Filt.cat: 3 VLT: 15%



Matrix small 52007-43
Frame: Shiny pink
Lens: Smoke with blue multi
Filt.cat: 3 VLT: 14%

MATRIX SMALL
11
PRICE MARK



Matrix small 52007-49
Frame: Matt wine red
Lens: Brown with rose multi
Filt.cat: 3 VLT: 15%

SPARE PARTS



PRICE MARK 3
52907-L0
Lens: Clear
Filt.cat: 0 VLT: 93%



PRICE MARK 3
52907-L4
Lens: Pink
Filt.cat: 1 VLT: 55%



PRICE MARK 6
C52907-L3
Lens: Smoke with silver mirror
Filt.cat: 3 VLT: 14%



PRICE MARK 6
C52907-L9
Lens: Brown with rose multi
Filt.cat: 3 VLT: 12%



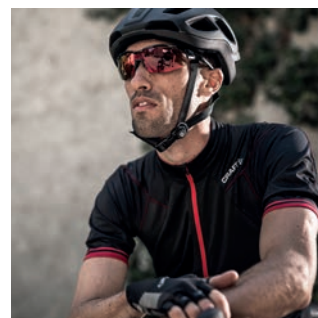
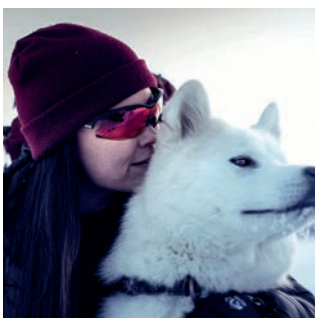
SPRINT

Versatility, design and fit are the outstanding features that make it easy to fall in love with Sprint. The glasses are made of the high quality material TR90 providing very lightweight and flexible properties. The model is equipped with an unbreakable X-PC lens with the best anti-fog and 100% UVA and UVB protection.

Sprint is delivered with an extra contrast lens, 20mm adjustable headband, soft and adjustable temple ends and nose piece. The unique lens shape also helps to prevent fogging by creating perfect air circulation behind the lenses. Sprint is a senior model designed to fit normal and large faces. Bliz Sprint is very well suited for cross-country skiing, cycling and running, but also works well for other sports.

TECHNICAL FEATURES

1. Handmade frame
2. One extra contrast lens included
3. Hydro Lens System™
4. Adjustable friction rubber nose pad
5. Adjustable temple tips in rubber wire core
6. Adjustable 20mm head strap
7. Removable sweat band that also regulate ventilation
8. Hard protective case
9. Cleaning cloth



SPRINT

PRODUCT OVERVIEW

ULTRA LENS SCIENCE™
21
 PRICE MARK



Sprint 52603-14
Frame: Shiny black
Lens: ULS / Photochromic brown with red multi
Filt.cat: 2-4 **VLT:** 36-7%

SPRINT
14
 PRICE MARK



Sprint 52603-13
Frame: Shiny black
Lens: Smoke with blue multi
Filt.cat: 3 **VLT:** 16%
X-Lens: Orange

SPARE PARTS



PRICE MARK **3**
52603-L0
Lens: Clear
Filt.cat: 1 **VLT:** 86%



PRICE MARK **3**
52603-L2
Lens: Pink
Filt.cat: 1 **VLT:** 63%



PRICE MARK **4**
52603-L1
Lens: Smoke with silver mirror
Filt.cat: 3 **VLT:** 14%



PRICE MARK **4**
52603-L3
Lens: Smoke with blue multi
Filt.cat: 3 **VLT:** 16%



HYBRID

The Hybrid frame, lens shape, high and close-to-the face positioning make it ideal for high speed activities where keeping focused means shielding the eyes from sun, wind and air-born particulates while delivering perfect unobstructed vision in every body position and speed.

Hybrid is ideal for the demands of cyclists, speed skaters and other high speed, back down, heads up sports due to its maximized sun and air deflection and high frame positioning. It is also great for those in medium speed sports who seek minimal airflow over their corneas. Its soft, infinitely adjustable nosepieces and temples allow a custom fit and a fine tuning of circulation.

Hybrid weighs only 29 grams. Each hard shell Hybrid kit comes with Perfect Curve bright light, low light, and clear lens sets (or universal ULS lens), cleaning cloth, plus the ability to add Bliz Opti Lens magnified computer reader lens.

TECHNICAL FEATURES

1. Two extra contrast lenses included
2. Hydro Lens System™
3. Adjustable friction rubber nose pad
4. Adjustable temple tips in rubber wire core
5. Hard protective case with pockets for extra lenses
6. Cleaning cloth



HYBRID

PRODUCT OVERVIEW

ULTRA LENS SCIENCE™
18
PRICE
MARK



Hybrid 52806-13U
Frame: Matt black/grey
Lens: ULS / Photochromic brown with blue multi
Filt.cat: 2-4 **VLT:** 43-7%

POLARIZED LENS
15
PRICE
MARK



Hybrid 52906-12
Frame: Matt black
Lens: Brown Polarized
Filt.cat: 3 **VLT:** 12%
X-Lens 1: Clear
X-Lens 2: Orange

HYBRID
12
PRICE
MARK



Hybrid 52806-03
Frame: White
Lens: Smoke with blue multi
Filt.cat: 3 **VLT:** 13%
X-Lens 1: Clear
X-Lens 2: Orange



Hybrid 52006-71
Frame: Camo green
Lens: Smoke with silver mirror
Filt.cat: 3 **VLT:** 14%
X-Lens 1: Clear
X-Lens 2: Orange



Hybrid 52806-54
Frame: Rubber black/shiny silver
Lens: Brown with red multi
Filt.cat: 3 **VLT:** 14%
X-Lens 1: Clear
X-Lens 2: Orange

HYBRID
11
PRICE
MARK



Hybrid 52806-10
Frame: Matt black
Lens: Smoke
Filt.cat: 3 **VLT:** 14%
X-Lens 1: Clear
X-Lens 2: Orange

SPARE
PARTS



PRICE
MARK 3
52806-L0
Lens: Clear
Filt.cat: 0 **VLT:** 91%



PRICE
MARK 4
52806-L1
Lens: Smoke with silver mirror
Filt.cat: 3 **VLT:** 11%

SPARE
PARTS



PRICE
MARK 7
Spare lenses +1,50 52806-LP-15
Lens: Clear + smoke
Filt.cat: 0+3 **VLT:** 91% + 14%



PRICE
MARK 7
Spare lenses +2,00 52806-LP-20
Lens: Clear + smoke
Filt.cat: 0+3 **VLT:** 91% + 14%



PRICE
MARK 7
Spare lenses +2,50 52806-LP-25
Lens: Clear + smoke
Filt.cat: 0+3 **VLT:** 91% + 14%



PRICE
MARK 2
Optical adapter for Hybrid 9026/27/28-RX
Frame: Transparent
Lens: Clear



HYBRID SMALL

The Hybrid Small frame, lens shape, high and close-to-the face positioning make it ideal for high speed activities where keeping focused means shielding the eyes from sun, wind and air-borne particulates while delivering perfect unobstructed vision in every body position and speed.

Hybrid Small is ideal for the demands of cyclists, speed skaters and other high speed, back down, heads up sports due to its maximized sun and air deflection and high frame positioning. It is also great for those in medium speed sports who seek minimal airflow over their corneas. Its soft, infinitely adjustable nosepieces and temples allow a custom fit and a fine tuning of circulation.

Hybrid Small weighs only 26 grams. Each hard shell Hybrid kit comes with Perfect Curve bright light, low light, and clear lens sets (or universal ULS lens) and cleaning cloth.

TECHNICAL FEATURES

1. Two extra contrast lenses included
2. Hydro Lens System™
3. Adjustable friction rubber nose pad
4. Adjustable temple tips in rubber wire core
5. Hard protective case with pockets for extra lenses
6. Cleaning cloth



HYBRID SMALL

PRODUCT OVERVIEW

ULTRA LENS SCIENCE™
18
PRICE
MARK



Hybrid Small 52808-14U
Frame: Matt black/grey
Lens: ULS / Photochromic brown with red multi
Filt.cat: 1-3 **VLT:** 65-13%

POLARIZED LENS
15
PRICE
MARK



Hybrid Small 52908-12
Frame: Matt black
Lens: Brown Polarized
Filt.cat: 3 **VLT:** 12%
X-Lens 1: Clear
X-Lens 2: Orange

HYBRID SMALL
12
PRICE
MARK



Hybrid Small 52808-03
Frame: White
Lens: Smoke with blue multi
Filt.cat: 3 **VLT:** 13%
X-Lens 1: Clear
X-Lens 2: Orange



Hybrid Small 52808-41
Frame: Rubber neon pink
Lens: Smoke with silver mirror
Filt.cat: 3 **VLT:** 11%
X-Lens 1: Clear
X-Lens 2: Orange



Hybrid Small 52008-49
Frame: Matt wine red
Lens: Brown with rose multi
Filt.cat: 3 **VLT:** 15%
X-Lens 1: Clear
X-Lens 2: Orange

HYBRID SMALL
11
PRICE
MARK



Hybrid Small 52808-10
Frame: Matt black
Lens: Smoke
Filt.cat: 3 **VLT:** 14%
X-Lens 1: Clear
X-Lens 2: Orange

SPARE
PARTS



PRICE
MARK 3
52808-L0
Lens: Clear
Filt.cat: 0 **VLT:** 91%



PRICE
MARK 4
52808-L1
Lens: Smoke with silver mirror
Filt.cat: 3 **VLT:** 11%



TEMPO

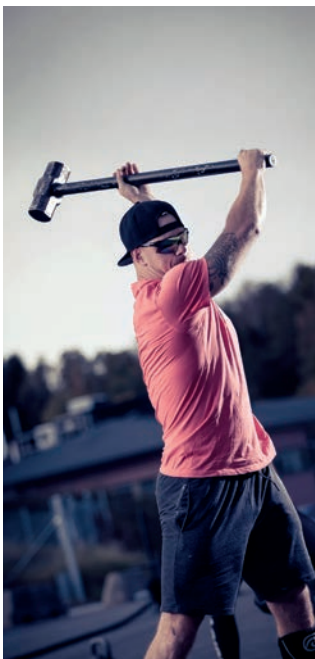
Tempo is the sunglass you forget you have on. It is both the lightest Bliz model and the model that rides closest to the face. It is also the model that has the most integrated strap for face hugging security.

Wear the 24 gram Tempo Smallface with its soft infinitely adjustable temples for perfect vision in road cycling, road running and triathlon. You can also remove the temples and snap in the strap to convert the glasses into a face hugging "goggle" for sports with greater upper body motion like paddling, trail running, cross country skiing or even mountain biking. Click in the sweat band when needed to stop sweat from trickling down your face. With the strap on, it is one of the lowest profile eyewear available and perfect for those who seek minimal airflow over their corneas.

Tempo comes with a bright light and a low light lens set, cleaning cloth, and its 20mm strap and sweat band.

TECHNICAL FEATURES

1. One extra contrast lens included
2. Hydro Lens System™
3. Attachable click-in 20mm head strap
4. Adjustable friction rubber nose pad
5. Adjustable temple tips in rubber wire core
6. Hard protective case with pockets for extra lenses
7. Removable Top Bar
8. Cleaning cloth



TEMPO

PRODUCT OVERVIEW

PRICE
MARK **12**



Tempo 9021-19
Frame: Matt black
Lens: Brown with gold multi
Filt.cat: 3 **VLT:** 12%
X-Lens: Orange



Tempo 9021-03
Frame: White
Lens: Smoke with blue multi
Filt.cat: 3 **VLT:** 14%
X-Lens: Orange

SPARE
PARTS



PRICE
MARK **3**
9021-L0-1
Lens: Clear
Filt.cat: 0 **VLT:** 91%



PRICE
MARK **3**
9021-L6
Lens: Yellow
Filt.cat: 1 **VLT:** 88%



PRICE
MARK **4**
9021-L1
Lens: Smoke with silver mirror
Filt.cat: 3 **VLT:** 11%



TEMPO SMALL

Tempo is the sunglass you forget you have on. It is both the lightest Bliz model and the model that rides closest to the face. It is also the model that has the most integrated strap for face hugging security.

Wear the 24 gram Tempo Smallface with its soft infinitely adjustable temples for perfect vision in road cycling, road running and triathlon. You can also remove the temples and snap in the strap to convert the glasses into a face hugging "goggle" for sports with greater upper body motion like paddling, trail running, cross country skiing or even mountain biking. Click in the sweat band when needed to stop sweat from trickling down your face. With the strap on, it is one of the lowest profile eyewear available and perfect for those who seek minimal airflow over their corneas.

Tempo comes with a bright light and a low light lens set, cleaning cloth, and its 20mm strap and sweat band.

TECHNICAL FEATURES

1. One extra contrast lens included
2. Hydro Lens System™
3. Attachable click-in 20mm head strap
4. Adjustable friction rubber nose pad
5. Adjustable temple tips in rubber wire core
6. Hard protective case with pockets for extra lenses
7. Removable Top Bar
8. Cleaning cloth

TEMPO SMALL
12
PRICE
MARK



Tempo Small 9025-19
Frame: Matt black
Lens: Brown with gold multi
Filt.cat: 3 VLT: 12%
X-Lens: Orange



Tempo Small 52807-41
Frame: Rubber neon pink
Lens: Smoke with silver mirror
Filt.cat: 3 VLT: 14%
X-Lens: Pink

SPARE
PARTS



PRICE MARK 3
9025-L0
Lens: Clear
Filt.cat: 0 VLT: 91%



PRICE MARK 4
9025-L1
Lens: Yellow
Filt.cat: 1 VLT: 88%



TARGA

Bliz Targa is a model that suits all faces. With its distinct lines and timeless aviator design, the Targa is an obvious choice. The Hybrid-look suits well whether you want to feel sporty or just want to hang out in the sun.

Targa is made of High Impact PC which is a strong, lightweight material. Perfect when you want to use glasses for a longer period of time. Temple tips and nosepiece have been equipped with friction rubber for a safe and comfortable position on the head.

TECHNICAL FEATURES

1. Click hinge
2. Friction rubber nose pad
3. Friction rubber temples
4. Soft microfiber case



TARGA

9

PRICE
MARK



Luna 54008-10
Frame: Matt black
Lens: Smoke
Filt.cat: 3
VLT: 13%



Luna 54008-13
Frame: Matt black
Lens: Smoke with blue multi
Filt.cat: 3
VLT: 13%



DRIFT

Drift are made to fit both men and women who appreciate the outdoors in all its shapes and forms. These are the ideal sportsglasses for long and happy days. Unbeatable fitting thanks to the wraparound frame, fantastic comfort on the skin through use of friction rubber materials, wide and perfect vision provided by the Bliz X-PC lens.

TECHNICAL FEATURES

1. Wrap around frame
2. Click hinge
3. Friction rubber nose pad
4. Friction rubber temples
5. Fusion Lens Tech™



DRIFT

PRODUCT OVERVIEW



DRIFT
PRICE
MARK 9



Drift 54001-03
Frame: Matt white
Lens: Smoke with blue multi
Filt.cat: 3 VLT: 14%



Drift 54001-13
Frame: Matt Black
Lens: Smoke with blue multi
Filt.cat: 3 VLT: 14%

DRIFT
PRICE
MARK 9



Drift 54001-14
Frame: Matt black
Lens: Smoke with red multi
Filt.cat: 3 VLT: 14%



Drift 54001-31
Frame: Shiny dark blue
Lens: Smoke with silver mirror lens
Filt.cat: 3 VLT: 11%

DRIFT
PRICE
MARK 9



Drift 54001-43
Frame: Matt pink
Lens: Smoke with blue multi
Filt.cat: 3 VLT: 14%



Drift 54001-73
Frame: Matt lime green
Lens: Smoke with blue multi
Filt.cat: 3 VLT: 14%



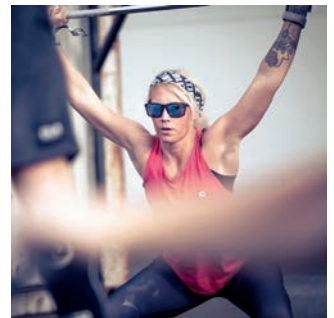
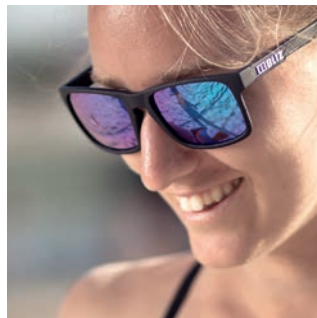
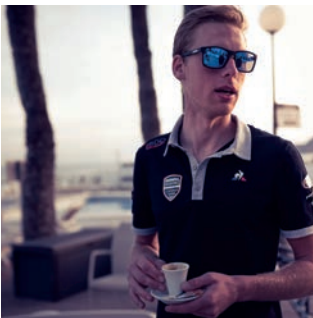
LUNA

Bliz Luna is certainly a model that fits everyone. With its classic lines and timeless feel, this hybrid is a safe bet for any occasion, whether you want to feel sporty or just want to hang out in the sun.

Luna is made of High Impact PC which is a strong, lightweight material. Perfect when you want to use glasses for a longer period of time. Temple tips and nosepiece have been equipped with friction rubber for a safe and comfortable position on the head.

TECHNICAL FEATURES

1. Click hinge
2. Friction rubber nose pad
3. Friction rubber temples
4. Soft microfiber case



PRICE
MARK
LUNA
9



Luna 54605-13
Frame: Matt black
Lens: Smoke with blue multi
Filt.cat: 3
VLT: 13%



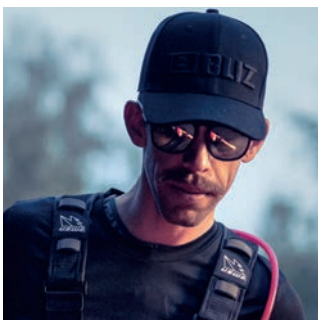
ACE

Combining fashion and sport, our essential style will fit into your busy, active lifestyle. The Ace will complement every outfit from work to weekend.

Ace are made from the light weight and durable material Grilamid TR90. Together with the rubber parts, Ace gives you that sporty look and feel. Its soft friction rubber nosepiece and temples allows for light weight comfort. Ace weighs only 27 grams. To enhance the quality even further Ace has been equipped with hinge temples for an exclusive feel.

TECHNICAL FEATURES

1. Click hinge
2. Friction rubber nose pad
3. Friction rubber temples
4. Soft microfiber case



PRICE
MARK
9



Ace 54907-13
Frame: Matt rubber black
Lens: Smoke with blue multi
Filt.cat: 3
VLT: 13%



Ace 54907-14
Frame: Matt rubber black
Lens: Smoke with rose gold multi
Filt.cat: 3
VLT: 13%



Ace 54007-31
Frame: Matt demi brown
Lens: Smoke
Filt.cat: 3
VLT: 13%

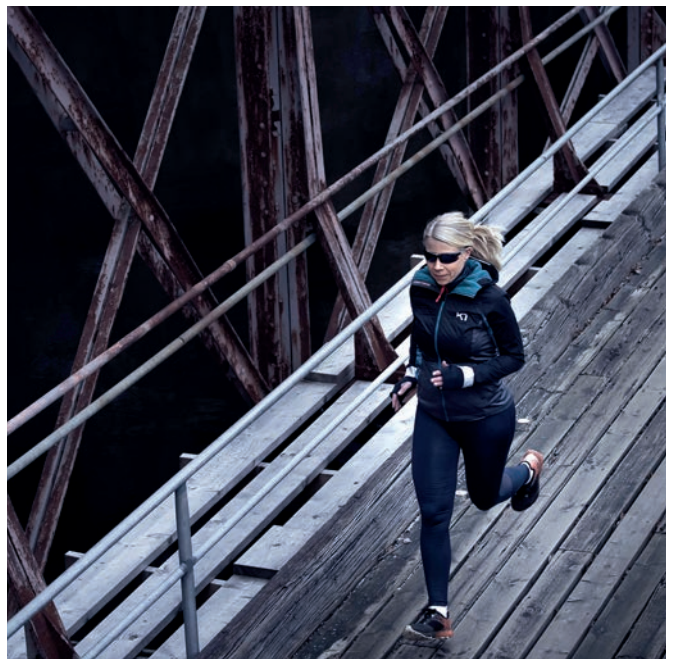


MOTION

The Motion's simplicity, versatility and near universal fit makes it one of our most popular designs. Its soft and infinitely adjustable nosepieces and its friction rubber temples allow for lightweight comfort. Motion weighs only 27 grams. Adjust the Motion close to your face for wind deflection in high speed sports like cycling or slightly farther off the face for ventilation needed in medium speeds sports like running or cross country skiing.

TECHNICAL FEATURES

1. Fusion Lens Tech™
2. Adjustable friction rubber nose pad
3. Friction rubber temples
4. Soft microfiber case



MOTION

PRODUCT OVERVIEW

MOTION+
PRICE
MARK 9



Motion+ 9062-01
Frame: Shiny white
Lens: Smoke w Silver Mirror
Filt.cat: 3 **VLT:** 16%
X-Lens 1: Clear
X-Lens 2: Orange



Motion+ 9062-10
Frame: Metallic black
Lens: Smoke with silver mirror
Filt.cat: 3 **VLT:** 16%
X-Lens 1: Clear
X-Lens 2: Orange

MOTION
PRICE
MARK 5



Motion 9060-01
Frame: Shiny white
Lens: Smoke with silver mirror
Filt.cat: 3 **VLT:** 10%



Motion 9060-08
Frame: Shiny white
Lens: Amber
Filt.cat: 3 **VLT:** 13%



Motion 9060-10
Frame: Metallic black
Lens: Smoke with silver mirror
Filt.cat: 3 **VLT:** 10%



Motion 9060-18
Frame: Shiny black
Lens: Orange
Filt.cat: 2 **VLT:** 42%



Motion 9060-34
Frame: Metallic blue
Lens: Smoke with silver mirror
Filt.cat: 3 **VLT:** 10%

MOTION SMALL
PRICE
MARK 5



Motion Small 52601-00
Frame: Shiny white
Lens: Amber
Filt.cat: 3 **VLT:** 12%



Motion Small 52601-10
Frame: Shiny black
Lens: Smoke with silver mirror
Filt.cat: 3 **VLT:** 10%



Motion Small 52601-40
Frame: Shiny pink
Lens: Smoke with silver mirror
Filt.cat: 3 **VLT:** 10%

PEAK



PEAK

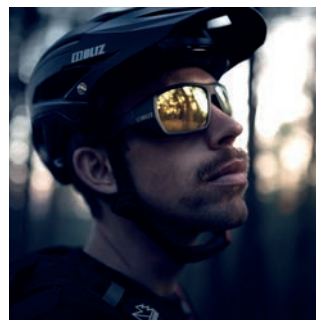
Peak is an innovative and technically advanced glacier frame for use in very strong sunlight. It will take you to new places and higher grounds.

Peak is made in Grilamid TR90 and comes with unbreakable X-PC lenses with 100% UVA and UVB protection. Customize and personalize your Peak with the removable side shields. The lenses are equipped with the best anti-fog protection and comes with a filter category 4 lens for extra strong sunlight on high altitudes.

As an insurance the included neck cord prevents the glasses from falling off your neck.

TECHNICAL FEATURES

1. Wrap around frame
2. Side shield for extra protection from the sun
3. Hydro Lens System™
4. Adjustable friction rubber nose pad
5. Adjustable temple tips in rubber wire core
6. Removable rubber parts
7. Extra neck cord
8. Soft microfiber case



Peak 52909-13U
 Frame: Matt black
 Lens: ULS / Photochromic brown with blue multi
 Filt.cat: 2-4
 VLT: 43-7%



Peak 52909-19
 Frame: Matt black
 Lens: Brown polarized with gold mirror
 Filt.cat: 4
 VLT: 8%



BACKBONE

Latest technology back protector with fully breathable mesh material and an ergonomically shaped foam liner for close-fitting.

The protector plate is made of a unique material that makes it soft and flexible when you cycle, providing the cyclist a comfortable ride all day long. In case of an accident, the plate stiffens, absorbing the impact for maximum level of protection.

The Bliz Backbone protector keeps cyclists safe in every environment and all situations.

Complies with standard EN 1621-2:2014

TECHNICAL FEATURES

1. Close-fitting
2. Elastic hip belt
3. Removable tailbone protection pad
4. Fully breathable mesh material
5. Removable back plate for easy washing
6. Hight adjustable hip belt
7. Designed and developed in sweden

	Size	Waist to shoulder length	Body height
58902-10-XS	XS JUNIOR	30-35 cm	130-145 cm
58901-10-S	S	35-38 cm	145-165 cm
58901-10-M	M	38-42 cm	165-175 cm
58901-10-L	L	42-48 cm	175-185 cm
58901-10-XL	XL	48-53 cm	185-200 cm

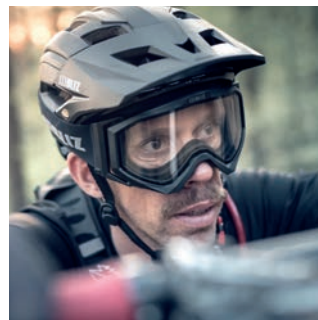


EDGE DROP

When you come to spend a day or two in the downhill mountains, you need to be prepared. The high speed of modern Downhill racing requires high-tech products. The Edge Drop has been created to optimize a riders field of view and ability to react to the course with the necessary speed and safety. Bliz Drop provides sun protection whatever the conditions. Fits effortlessly with helmets providing comfort and attractive looks at an affordable price.

TECHNICAL FEATURES

1. Flexible side clips
2. OTG ready
3. Double lens
4. Soft microfiber case
5. Unbreakable X-PC lens
6. 50mm silicone strap
7. Three layer soft foam



EDGE DROP

PRODUCT OVERVIEW

PRICE MARK

DROP

11



Drop 60001-13
Frame: Matt black
Lens: Light orange with blue multi
Filt.cat: 1 **VLT:** 55%

PRICE MARK

DROP

10



Drop 60001-10
Frame: Matt black
Lens: Clear
Filt.cat: 0 **VLT:** 91%



Drop 60001-40
Frame: Matt pink
Lens: Clear
Filt.cat: 0 **VLT:** 91%

PRICE MARK

DROP

10



Drop 60001-60
Frame: Matt yellow
Lens: Clear
Filt.cat: 0 **VLT:** 91%



Drop 60001-70
Frame: Matt green
Lens: Clear
Filt.cat: 0 **VLT:** 91%

SPARE PARTS



PRICE MARK

60001-L0
Lens: Clear
Filt.cat: 0 **VLT:** 91%



PRICE MARK

60001-L3
Lens: Light orange with blue multi
Filt.cat: 1 **VLT:** 55%



ZONAR

One of the toughest challenges a cyclist can face is the wind. Another one is heat. A cycling race can play out in various shapes and scenarios. As a cyclist you need to stay sharp and adaptable at all times, so does your equipment. Zonar is a lightweight helmet with multi purpose design, re-defining aerodynamics. The special shape and adjustable cover either reduces drag when closed or increases airflow by exposing the integrated ventilation channels. Our innovative Bliz AirFlow Vent Technology reduces air resistance when needed, and gives the wearer a nice breeze, creating a perfect climate and keeping your head cool even in hot races.

TECHNICAL FEATURES

1. Adjustable ventilation with a movable slider
2. Airflow Ventilation System™ Bliz's Airflow Ventilation System was developed using low and high-speed fluid dynamics studies to deliver ideal airflow rates that vary within and around the helmet at every speed. The result is a helmet that delivers pleasant and effective ventilation for increased comfort and safety.
3. Reflective logo and details
4. Inmould construction, PC shell with EPS Core
5. Adjustable strap for perfect fit and increased comfort.
6. 2-way size adjustment retention system to adjust the size and position up & down.
7. Sunglass dock allows you to quickly and securely stow your sunglasses on your helmet.
8. • Lightweight



SMALL
56007-10-5054
Color: Matt black
Size: Small 50-54cm

MEDIUM
56007-10-5458
Color: Matt black
Size: Medium 54-58cm

LARGE
56007-10-5861
Color: Matt black
Size: Large 58-61cm



SMALL
56008-10-5054
Color: Matt black
Size: Small 50-54cm

MEDIUM
56008-10-5458
Color: Matt black
Size: Medium 54-58cm

LARGE
56008-10-5861
Color: Matt black
Size: Large 58-61cm



ZONAR
PRICE MARK
14

ZONAR MIPS
PRICE MARK
17

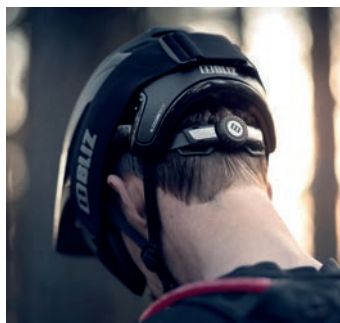


CROSS

A perfect helmet for everyone who does not want to compromise on safety and comfort. This all-mountain helmet is light, extremely well ventilated and extremely comfortable. It is perfect for racing or everyday off-road use. Thanks to the 2-way size adjustment, the helmet can be individually adjusted to fit your head and fits securely and firmly.

TECHNICAL FEATURES

1. Removable visor
2. Ventilated
3. Reflective logo and details
4. Inmould construction, PC shell with EPS Core
5. Adjustable strap for perfect fit and increased comfort.
6. Retention system to adjust the size
7. Lightweight



CROSS

13

PRICE
MARK

MEDIUM
56006-10-5458
Color: Matt black
Size: Medium 54-58cm

LARGE
56006-10-5861
Color: Matt black
Size: Large 58-61cm





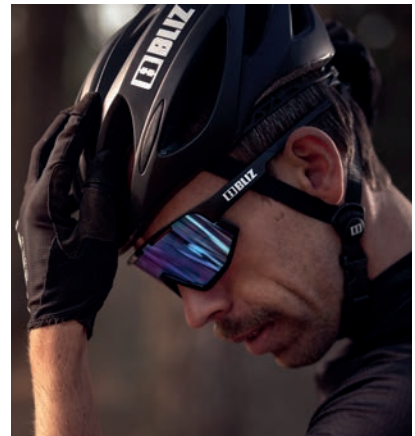
ALPHA

If you need a cool comfort helmet with great performance in every environment. Whether you're on the open road or your favourite single track in the woods - Alpha is the ultimate choice.

Developed with input from World Tour athletes, the Bliz Alpha delivers cool, comfortable protection. Its highly ventilated polycarbonate shell is mated to a lightweight EPS core and adjustable cradle to securely wrap and protect your valuable brain. Our Max -Airflow Ventilation System alters air flows within and around the helmet based on your speed for maximum ventilation and cooling without brain freeze. If you aspire to be a World Tour athlete or just a weekend warrior, the light weight and highly ventilated Bliz Alpha delivers perfect cool comfort and protection in every terrain and environment.

TECHNICAL FEATURES

1. Bliz AirFlow System™
2. 2-way size adjustment



ALPHA

PRODUCT OVERVIEW

ALPHA
12
PRICE
MARK

SMALL
56904-10-5054
Color: Matt black
Size: Small 50-54cm

MEDIUM
56904-10-5458
Color: Matt black
Size: Medium 54-58cm

LARGE
56904-10-5861
Color: Matt black
Size: Large 58-61cm



ALPHA
12
PRICE
MARK

SMALL
56904-00-5054
Color: Matt white
Size: Small 50-54cm

MEDIUM
56904-00-5458
Color: Matt white
Size: Medium 54-58cm

LARGE
56904-00-5861
Color: Matt white
Size: Large 58-61cm



Mips
ALPHA MIPS
15
PRICE
MARK

SMALL
56905-10-5054
Color: Matt black
Size: Medium 50-54cm

MEDIUM
56905-10-5458
Color: Matt black
Size: Medium 54-58cm

LARGE
56905-10-5861
Color: Matt black
Size: Large 58-61cm





OMEGA

Omega is a smart everyday cycling helmet design. Combining performance, aerodynamic and light weight with great cooling power for optimal comfort and efficiency in road rides and races.

Developed with input from World Tour athletes, the Bliz Omega delivers high speed comfort and protection. Its aerodynamic polycarbonate shell is mated to a lightweight EPS core and micro adjustable cradle to securely wrap and protect your valuable brain. Our Aero - Airflow Ventilation System alters air flows within and around the helmet based on your speed for crucial ventilation at low speeds yet without unwanted aero drag at high speeds. If you aspire to be a World Tour athlete or just a weekend warrior, the light weight and aerodynamic Bliz Omega allows you to reach your highspeed goals in comfortable protection.

TECHNICAL FEATURES

1. Bliz AirFlow System™
2. 2-way size adjustment





SMALL
56903-00-5054
Color: Matt white
Size: Small 50-54cm

MEDIUM
56903-00-5458
Color: Matt white
Size: Medium 54-58cm

LARGE
56903-00-5861
Color: Matt white
Size: Large 58-61cm



OMEGA
PRICE
MARK
14



SMALL
56903-10-5054
Color: Matt black
Size: Small 50-54cm

MEDIUM
56903-10-5458
Color: Matt black
Size: Medium 54-58cm

LARGE
56903-10-5861
Color: Matt black
Size: Large 58-61cm



OMEGA
PRICE
MARK
14



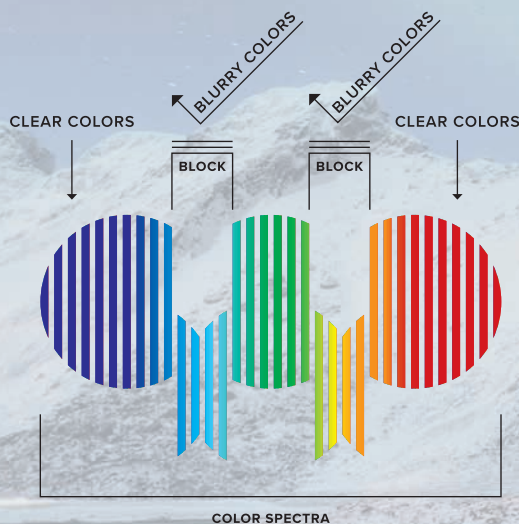
REVEAL YOUR TRUE ENVIRONMENT

Born and raised in the north. Shaped and molded by harsh and unforgiving environments. Approved by the real natives of Scandinavia. This is what led to the creation of Nordic Light.

Nordic Light is a unique lens, developed and designed to suit the flat light weather conditions of the north. A light that can be hard on the eyes when it comes to contrast. The Nordic Light lens primarily filters out the red and the "harmful" blue light. This enhances and the variations in the snowy terrain. The other color peaks offer

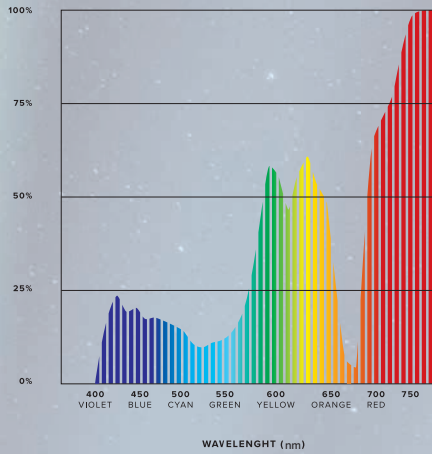
greater permeability, giving you the best available color perception. By removing some aspects of the color spectrum, we greatly improve your vision and performance.

Testing things in laboratory conditions is great. But what does that say about user experience? We have had the world elite in Alpine skiing test the lenses in the toughest possible environment. After getting their feedback, this is the end result. Nordic Light.



REMOVE TO IMPROVE

Your eyes are amazing – but not always perfect. It's difficult to distinguish colors between the blue and the green, and the green and the red wavelengths. These crossovers are blocked by the Nordic Light lens, providing the carrier greater contrast and clarity in tough conditions.



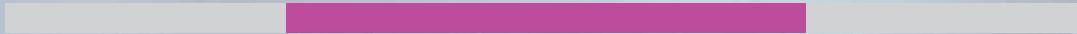
BEGONIA- VIOLET

Light transmission: 25-28%
 Category: 2
 Mirror: Blue multicoating
 Hydrophobic, Oleophobic and Anti-Fog

Innovative allround lens with game changing characteristics. The recipe pops the contrasts and blocks the faded colors in between. The lens is a violet filt.cat 2 lens. It cuts out parts of red light and vastly enhances flat light visibility. Additionally, it also blocks out destructive UV-light.

The filt.cat 2 makes this a great lens in every environment and every weather condition. Glare from the sun is cut by the multi coated color. Compared to the Coral lens, this lens works best in varying weather conditions.

NORDICLIGHT BEGONIA LENS



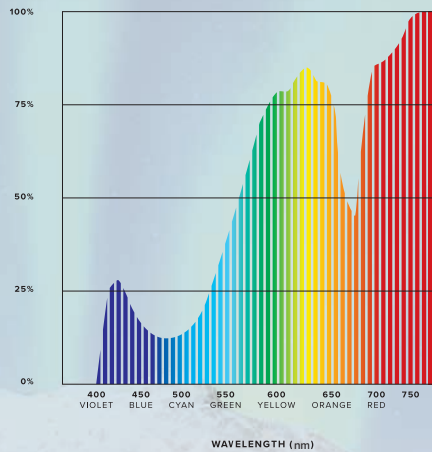
Fusion 52005-14N
 Frame: Matt black
 Lens: Violet with blue multi
 Filt.cat: 2 VLT: 22%
 X-Jawbone: Black



Matrix 52004-14N
 Frame: Matt black
 Lens: Violet with blue multi
 Filt.cat: 2 VLT: 22%



Matrix small 52007-14N
 Frame: Matt black
 Lens: Violet with blue multi
 Filt.cat: 2 VLT: 22%



CORAL - AMBER

Light transmission: 49-51%
 Category: 1
 Mirror: Blue
 Hydrophobic, Oleophobic and Anti-Fog

Groundbreaking filt.cat 1 lens that enhances contrasts and blocks out destructive UV-light. These lenses cut out the blurry light in between the clear colors. Leaving the clear colors gives your eyes more comfort and better vision. The experience is that your visual perception is boosted and you see contrasts more clearly.

The soft and relaxing amber color gives your eyes the relaxation and contrast needed to keep focused all day long, especially in bad weather conditions.

NORDICLIGHT CORAL LENS



Fusion 52005-13N
 Frame: Matt black
 Lens: Orange with blue multi
 Filt.cat: 1 VLT: 49%
 X-Jawbone: Black



Matrix 52004-13N
 Frame: Matt black
 Lens: Orange with blue multi
 Filt.cat: 1 VLT: 49%



Matrix small 52007-13N
 Frame: Matt black
 Lens: Orange with blue multi
 Filt.cat: 1 VLT: 49%



NINE FEATURES. ONE LENS.

We keep pushing the limits towards perfection every day. Our latest achievement is Bliz Ultra Lens Science™ - A truly spectacular lens concept which provide top performance and optical quality by adding nine important features in one single lens.

ULS™ delivers perfect vision in most every environment by bringing the lonest list of features together for the first time anywhere. Photochromatic, Oleophobic, Hydrophobic, Anti-scratch, Anti-fog, Multicoating, Shatter proof, Max UV-protection and Perfect curve are all in this proprietary unique Bliz lens.





SAFETY STANDARDS SPORTS GLASSES

All ULS™ glasses are equipped with Bliz Lens Technology™ to deliver precision lens sets of the highest optical standards. The materials and manufacturing techniques selected provide maximum safety and clarity, even in the toughest conditions.

Bliz ULS lenses are made with Bliz X-PC™, the virtually unbreakable Polycarbonate that complies with EN ISO 12312-1:2013, AS/NZS 1067:2003/

AMDT 1:2009 & ANSI Z80.3:2010 for high-mass and high velocity impact. This state of the art lens material also delivers a 100% filter for harmful UVA- and UVB rays.

Bliz Ultra Lens Science™ delivers the highest lens quality for any weather, every light, all terrains and every speed so you can keep focused on what's ahead.

BLIZ ULS™ SPORTS GLASSES	
COMMON FEATURES	LENS FEATURES
<ul style="list-style-type: none"> - Adjustable friction rubber nose pad - Adjustable temple tips in rubber wire core - Removable sweat band - Hard protective case with pockets for extra lenses - Cleaning cloth - Light and flexible Grilamid TR90 - Complies with European standard EN ISO 12312-1:2013, AS/NZS 1067:2003/AMDT 1:2009 & ANSI Z80.3:2010 	<ul style="list-style-type: none"> - Polycarbonate X-PC material - Photochromatic - VLT 27- 5% - Filt.Cat 2-3 - Photochromatic - VLT 34-19% - Filt.Cat 2-4 <div style="display: flex; justify-content: space-around; align-items: flex-start; margin-top: 20px;"> <div style="text-align: center;">  <p>SPRINT 52603-14 Filt.Cat 2-4 Price Mark 21</p> </div> <div style="text-align: center;">  <p>HYBRID SMALL 52808-14U Filt.Cat 2-4 Price Mark 18</p> </div> </div> <div style="display: flex; justify-content: space-around; align-items: flex-start; margin-top: 20px;"> <div style="text-align: center;">  <p>HYBRID 52806-13U Filt.Cat 1-3 Price Mark 18</p> </div> <div style="text-align: center;">  <p>PEAK 52909-13U Filt.Cat 2-4 Price Mark 18</p> </div> </div>

LENS FEATURES SPORTS GLASSES



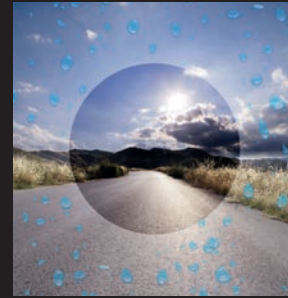
PHOTOCHROMATIC

The lens changes its shading automatically and instantly from light to dark and back again based on the weather condition.



ANTI-SCRATCH

This drastically reduces the appearance of thin hairline scratches, keeping your lenses in perfect shape longer.



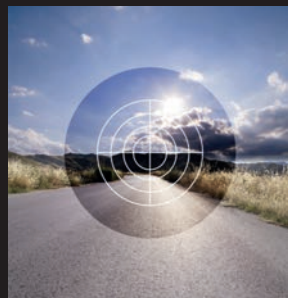
HYDROPHOBIC

The hydrophobic coatings keep rain, snow and water drops off the lens.



ANTI-FOG

Eliminates condensation and moisture on the lens, ensuring optimal fog free visibility in every condition.



SHATTER PROOF

Unbreakable lenses to resist impacts without causing any damage to your eyes.



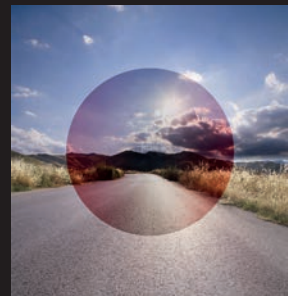
OLEOPHOBIC

This greatly helps keeping the lenses clean from dirt and oily stains.



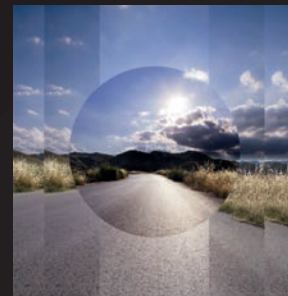
UV PROTECTION

The filter blocks harmful UVA- and UVB rays from reaching your eyes.



MULTICOATING

Providing a minimizing effect of glare and giving you perfect visual qualities in the most demanding situations.



PERFECT CURVE

Every lens is cut out with perfection and accuracy providing minimized distortion in the field of view.

EBLIZ

VISION



52001-03
Price Mark: 13



52001-14
Price Mark: 13



52001-43
Price Mark: 13



52001-63
Price Mark: 13

FUSION



52005-13N
Price Mark: 14



52005-14N
Price Mark: 14



52905-04
Price Mark: 12



52905-13
Price Mark: 12



52905-34
Price Mark: 12



52005-71
Price Mark: 12

MATRIX



52004-13N
Price Mark: 12



52004-14N
Price Mark: 12



52804-03
Price Mark: 11



52904-03
Price Mark: 11



52804-14
Price Mark: 11



52004-31
Price Mark: 11



52904-43
Price Mark: 11



52004-71
Price Mark: 11

MATRIX SMALL



52007-13N
Price Mark: 12



52007-14N
Price Mark: 12



52907-03
Price Mark: 11



52007-13
Price Mark: 11



52907-34
Price Mark: 11



52007-49
Price Mark: 11

SPRINT



52603-14
Price Mark: 21



52603-13
Price Mark: 14

HYBRID



52806-13U
Price Mark: 18



52906-12
Price Mark: 15



52806-03
Price Mark: 12



52006-71
Price Mark: 12



52806-54
Price Mark: 12



52806-10
Price Mark: 11

HYBRID SMALL



52808-14U
Price Mark: 18



52908-12
Price Mark: 15



52808-03
Price Mark: 12



52808-41
Price Mark: 12



52008-49
Price Mark: 12



52808-10
Price Mark: 11

TEMPO



9021-19
Price Mark: 12



9021-03
Price Mark: 12

TEMPO SMALL



9025-19
Price Mark: 12



52807-41
Price Mark: 12

MOTION+



9062-01
Price Mark: 9



9062-10
Price Mark: 9

MOTION



9060-01
Price Mark: 5



9060-08
Price Mark: 5



9060-10
Price Mark: 5



9060-18
Price Mark: 5



9060-34
Price Mark: 5

MOTION SMALL



52601-00
Price Mark: 5



52601-10
Price Mark: 5



52601-40
Price Mark: 5

DRIFT



54001-03
Price Mark: 9



54001-13
Price Mark: 9



54001-14
Price Mark: 9



54001-31
Price Mark: 9



54001-43
Price Mark: 9



54001-73
Price Mark: 9

LUNA



54605-13
Price Mark: 9

ACE



54907-13
Price Mark: 9



54907-14
Price Mark: 9



54007-31
Price Mark: 9

PEAK



52909-13U
Price Mark: 18



52909-13U
Price Mark: 15

TARGA



54008-10
Price Mark: 9



54008-12
Price Mark: 9

EDGE DROP



60001-13
Price Mark: 11



60001-10
Price Mark: 11



60001-40
Price Mark: 10



60001-60
Price Mark: 10



60001-70
Price Mark: 10

ZONAR



Small 56007-10-5054
Medium 56007-10-5458
Large 56007-10-5861
Price Mark: 14



Small 56008-10-5054
Medium 56008-10-5458
Large 56008-10-5861
Price Mark: 17

OMEGA



Small 56903-00-5054
Medium 56903-00-5458
Large 56903-00-5861
Price Mark: 14



Small 56903-10-5054
Medium 56903-10-5458
Large 56903-10-5861
Price Mark: 14

ALPHA



Small 56904-00-5054
Medium 56904-00-5458
Large 56904-00-5861
Price Mark: 12



Small 56904-10-5054
Medium 56904-10-5458
Large 56904-10-5861
Price Mark: 12



Small 56905-10-5054
Medium 56905-10-5458
Large 56905-10-5861
Price Mark: 15

CROSS



Medium 56006-10-5458
Large 56006-10-5861
Price Mark: 13



PROTECTIVE
SPORTS GEAR
**FOR ACTIVE
PEOPLE**

BLIZ.COM

 **BLIZ**